



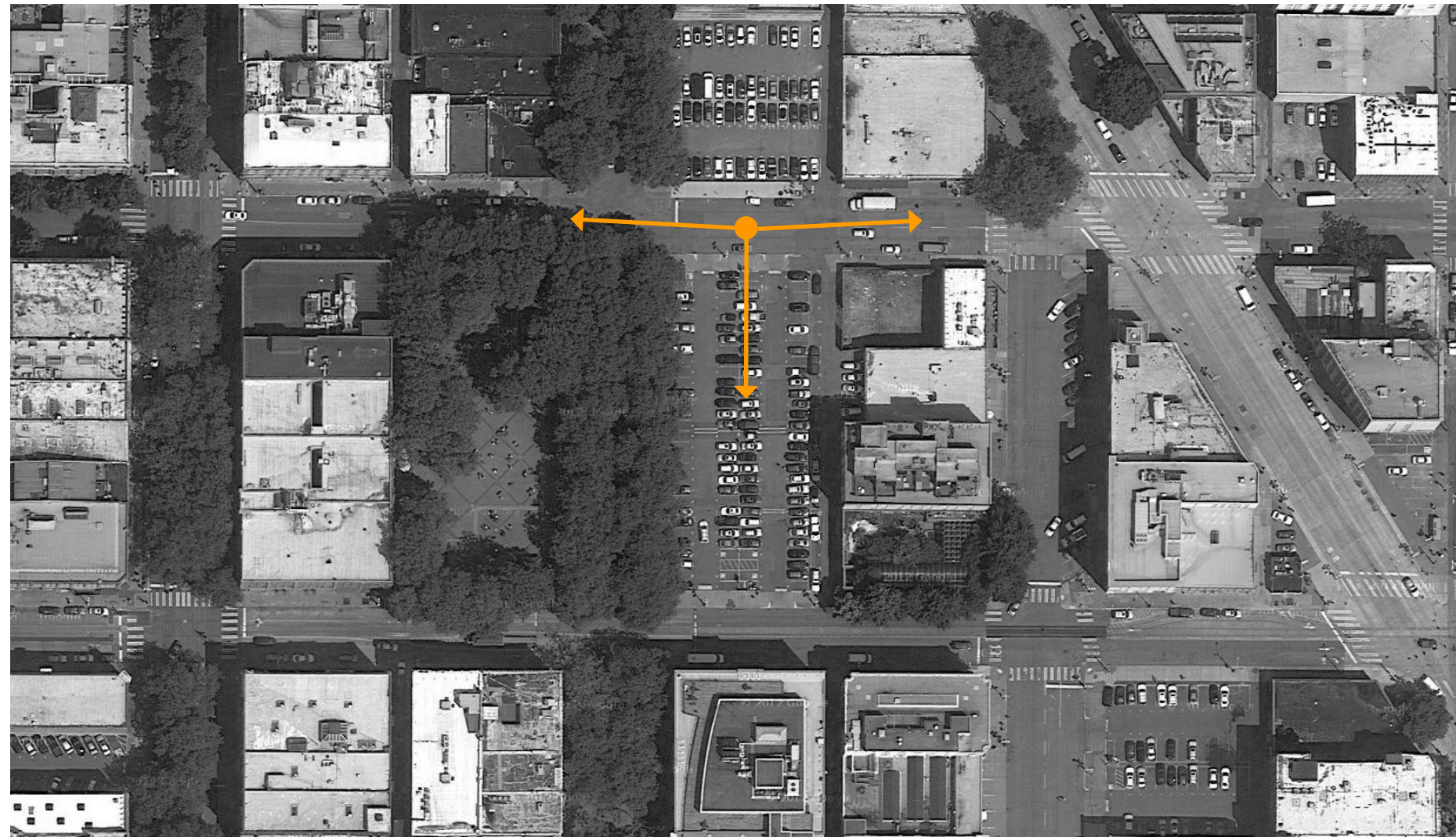
se



S



SW





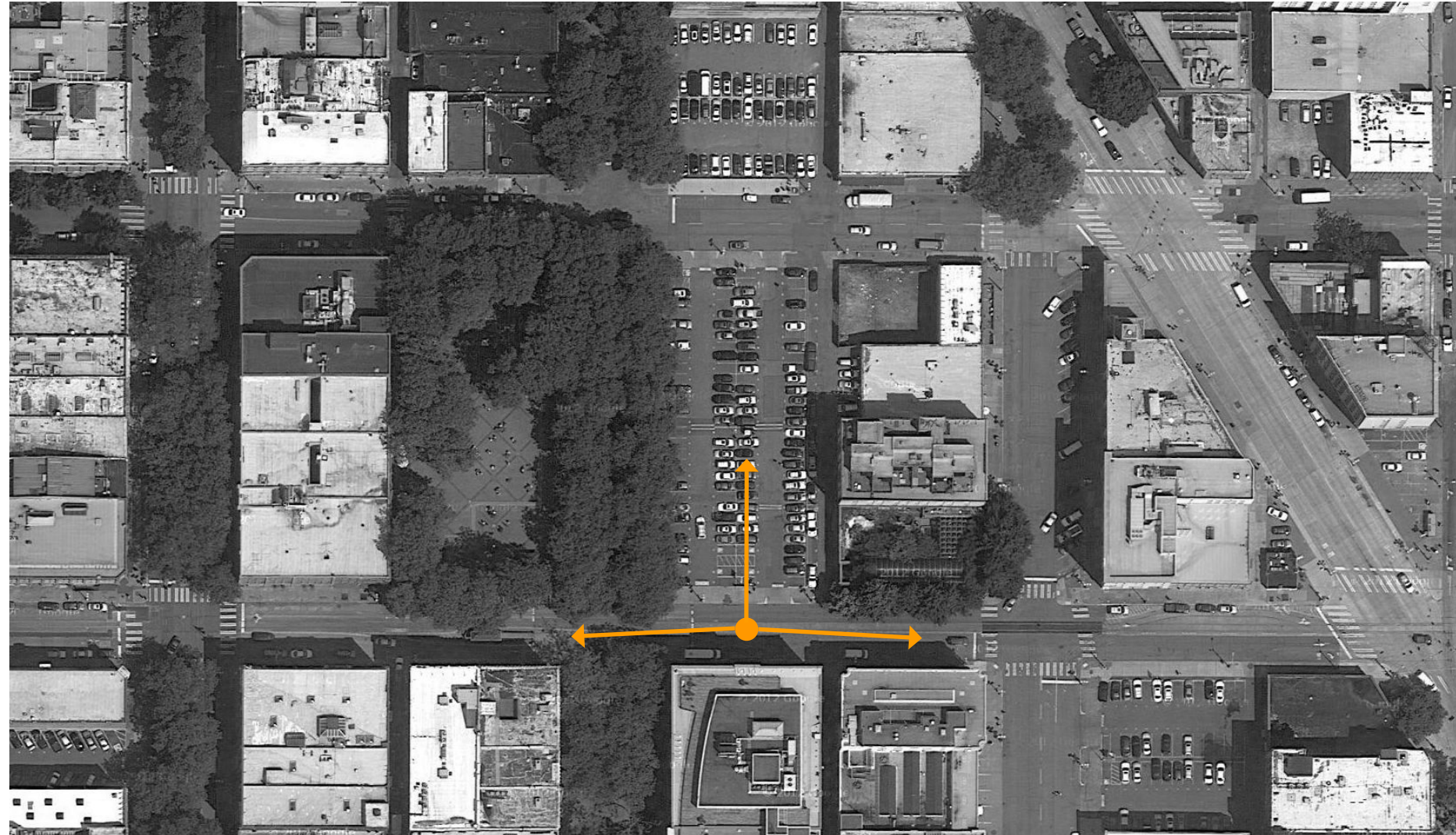
nw



n



ne



The Physical and Vernacular Urban Context

Immediate context:

North:

South Washington Street

Parking lot with 2-5 story buildings beyond

One story commercial buildings, just after an alley, are on the east, with an open pedestrian area on the corner, with trees and paved in red brick

To the west is an extension of the park where the Occidental Ave S is not closed to traffic, but it is paved in brick and has lots of trees.

Further west is 1, 2 or 4 story buildings with commercial use on the first floor.



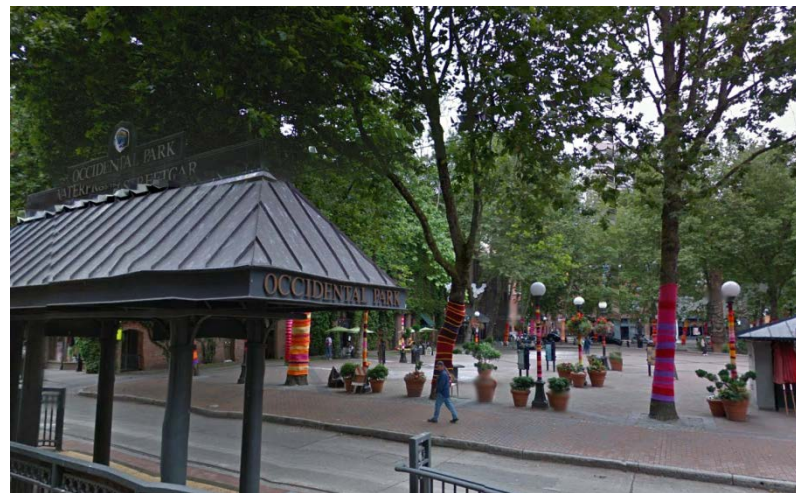
West:

Occidental Ave. S (street closed to traffic)

Park, brick paving, places to sit, lots of trees

South of the park is a bus stop.

West edge of the park is a row of 3 story buildings. The back of first floors have adapted to the park, they have commercial functions, but for foot traffic.



South:

South Main Street

“State Building” An old four story brick building that appears to be unoccupied, at least in part.

To the west is an extension of the park where the Occidental Ave S continues to be closed to traffic.

To the east is the Seattle Fire Department Headquarters



East:

Narrow Alley

Row of buildings

North, East building (possible two buildings) is one story, brick (red and grey) on front and sides, set back from alley. Commercial (two restaurants and a gallery)

Middle East building, 5 stories plus lower floor with access to alley, no setbacks, with large windows and brick. Commercial on First floor, loft apartments above

South, East building, some kind of walled

garden with brick and metal, and lots of trees and plants.

2 Ave South (sidewalks and parking along both sides of street.

Streets:

Most of the streets are two lanes of traffic, one going each direction. There is parking along each side, with a few exceptions. There is then a sidewalk, which has signs and green fire hydrants, and street lamps, etc.

The streets are straight, and follow a grid. This site is very close to where the street grid shifts, creating some triangular blocks.

The ground is sloping up to the East, and down to the West (towards the water).

